



Cotton Comments

OSU Southwest Oklahoma Research and Extension Center
Altus, OK



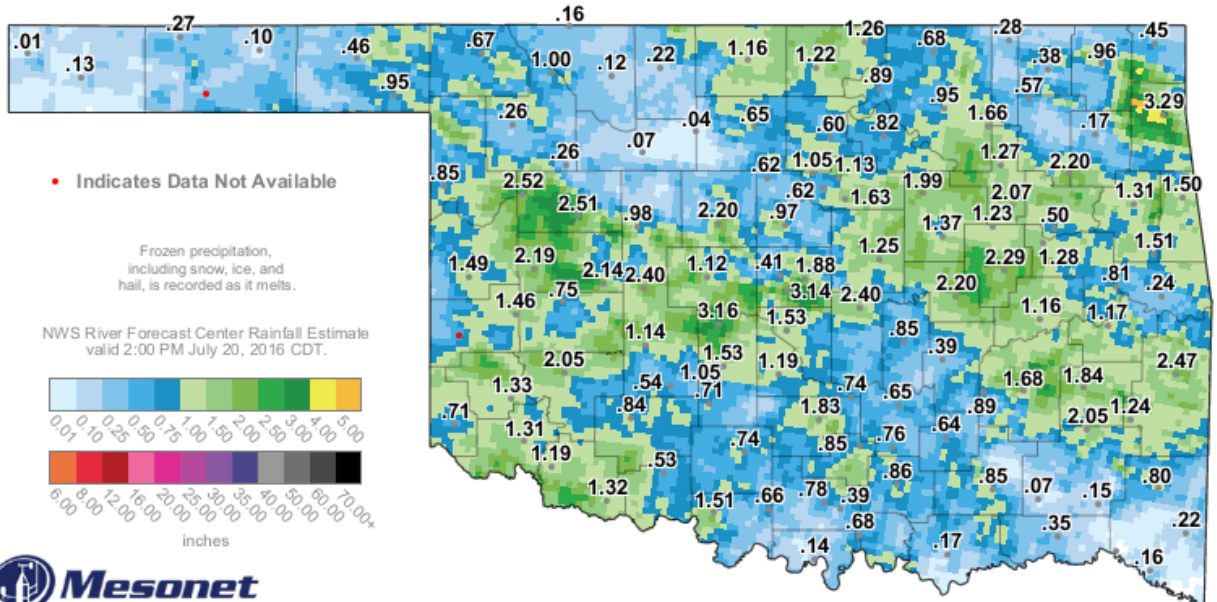
July 20, 2016

Volume 6 No. 6

Crop Update

Highly beneficial precipitation continues across the heart of cotton country in southwestern Oklahoma. Over the past week, Mesonet stations reported from 0.7 inch in Harmon County to about 1.3 inches at Altus, while Tillman County stations reported nearly 1.2 inches at Tipton and 1.3 inches at Grandfield (see graphic below). This is outstanding rainfall for July. Hopefully we can keep this coming.

According to the Mesonet Irrigation Planner, irrigated cotton planted at Altus on May 15th had about 1.8 inches of crop evapotranspiration (ET) during the past week. Irrigated cotton planted May 15th near Hollis and Tipton had just over 2 inches in crop ET for the past week.



7-Day Rainfall Accumulation (inches)

3:25 PM July 20, 2016 CDT
Created 3:29:30 PM July 20, 2016 CDT. © Copyright 2016

Plant Growth Regulators Revisited

The June 30th edition of Cotton Comments had a lot of information concerning plant growth regulators (PGRs). Recently, I was able to update the variety growth habit table with information on 2016 varieties. I incorporated that into a stand-alone handout that summarizes cotton PGR issues.

[For a copy of the complete PGR handout with growth habits of many cotton varieties grown in Oklahoma in 2016, click here.](#)

RB

Insect Update

The insect outlook is as follows: Light infestations of pests continue. With most fields blooming or on the verge of blooming, scouting should shift to mid-season pests. A concern was voiced about cotton that has not yet started to square. These fields should not be an automatic cotton fleahopper control sprays, but should be monitored closely for these insect pests. One should confirm that they are present and in sufficient numbers to justify the cost of control with each field being evaluated for yield potential. It has been brought to our attention that a light infestation of spider mites was discovered in Jackson County. Preservation of beneficial arthropods is crucial to curb outbreaks of cotton aphids and spider mites. Selecting the right insecticide for early thrips and fleahopper control is crucial. Weekly scouting should continue for all pests. Pheromone trap counts for cotton bollworm, tobacco budworm, and beet armyworm moths are very low with the July flight almost nonexistent at trapping sites.

In other crop news, a sugarcane aphid control application in a field near Chattanooga in Tillman County was reported by crop consultant Jerry Stoll. All fields should be monitored weekly until harvest. For more information about this pest please contact your local county extension office or this office.

This week's summary of surveyed counties and fields is presented below along with moth trap reports.

Field Surveys – Week Ending July 22, 2016

Location	Date of planting	Plant Stage	Insects	Comments
Blaine Irrigated Cotton Inc Enhanced Variety - Schantz	May 26	9.00 NAWF	None Detected	Good
Blaine Irrigated Dow Innovation - Schantz	May 26	9.75 NAWF	None Detected	Good
Caddo Irrigated OVT – OSU Caddo Research Station	May 26	9.25 NAWF	None Detected	Good
Harmon Irrigated RACE – Cox	May 27	Prebloom with few varieties blooming	None Detected	Good
Harmon Irrigated CAP – Horton	April 28	9.25 NAWF	None Detected	Fair
Jackson Irrigated RACE – Darby	May 31	Prebloom	None Detected	Fair
Jackson Irrigated PhytoGen Innovation - Darby	May 31	Prebloom	None Detected	Fair
Jackson Irrigated OVT – OSU SWREC	May 27	Prebloom	None Detected	Fair
Jackson Dryland RACE - Abernathy	June 9	Prebloom	None Detected	Good
Jackson Irrigated Cotton Inc Enhanced Variety - Abernathy	May 27	9.90 NAWF	None Detected	Good
Jackson Irrigated PhytoGen Innovation Trial – OSU SWREC	May 31	Prebloom	None Detected	Good
Jackson Irrigated Entomology Trials – OSU SWREC	June 7	Prebloom	None Detected	Fair
Tillman Irrigated RACE – Nichols	June 6	Hail damage from July 8 storm event		
Tillman Dryland OVT – OSU Tipton Valley Research Center	June 8	Prebloom	None Detected	Fair

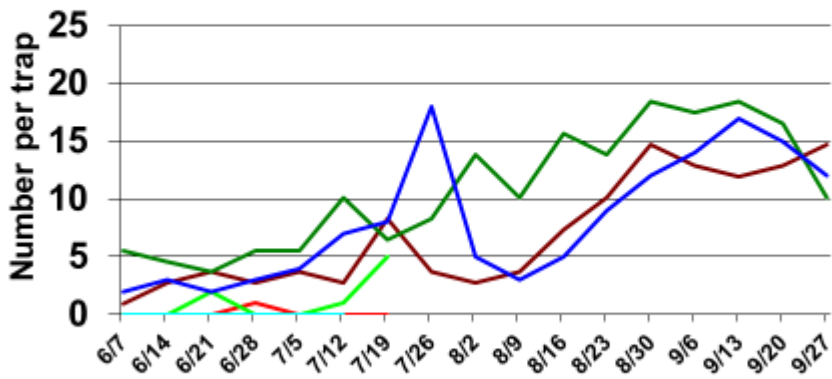
RACE – Replicated Agronomic Cotton Evaluation Trial (Oklahoma Cooperative Extension)

CAP – Cotton Agronomic Plot (Bayer CropScience)

OVT – Official Variety Trial (Oklahoma Agricultural Experiment Station, Altus, Tipton, Fort Cobb)

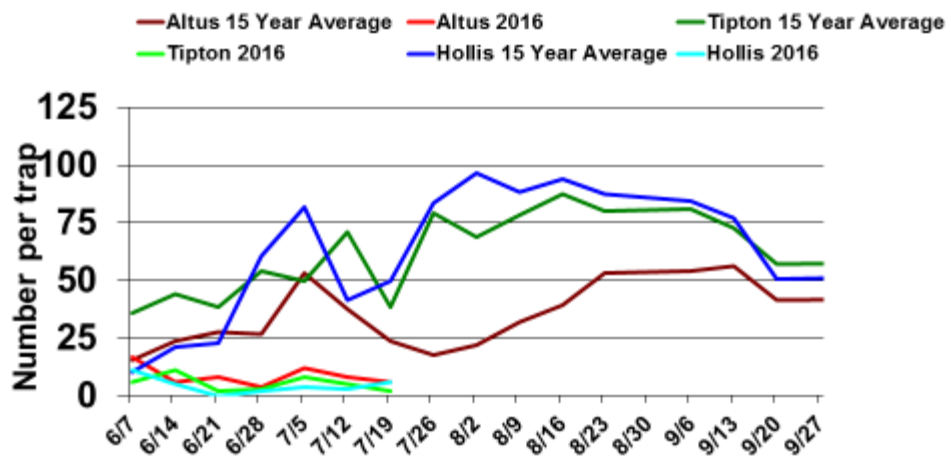
Beet Armyworm Pheromone Trap Catches

— Altus 15 Year Average — Altus 2016 — Tipton 15 Year Average
— Tipton 2016 — Hollis 15 Year Average — Hollis 2016



Beet armyworm moth

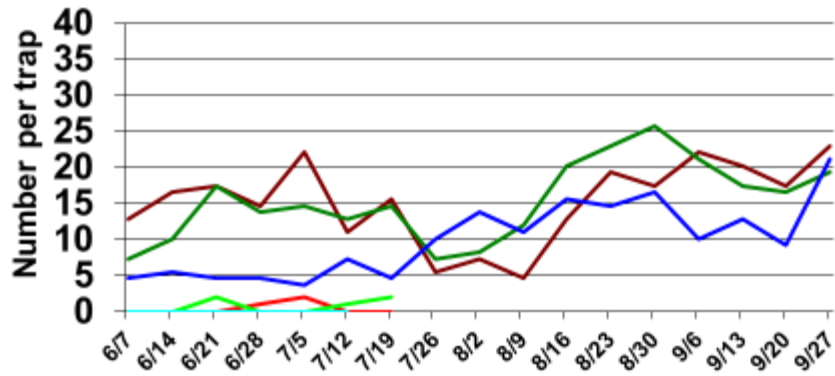
Cotton Bollworm Pheromone Trap Catches



Cotton bollworm moth

Tobacco Budworm Pheromone Trap Catches

— Altus 15 Year Average — Altus 2016 — Tipton 15 Year Average
— Tipton 2016 — Hollis 15 Year Average — Hollis 2016



Tobacco budworm moth

JG

Please give credit to this newsletter if any information is reproduced or incorporated in any other communications. Thank you.

Editors
Randy Boman
Jerry Goodson

[SEND US A COMMENT BY EMAIL](#)

Contributing Authors
Randy Boman
Jerry Goodson

The Cotton Comments Newsletter is maintained by Jerry Goodson, Extension Assistant. If you would like to receive this newsletter via email, send a request to:

jerry.goodson@okstate.edu

Randy Boman
Research Director and Cotton Extension Program Leader
16721 US Hwy. 283
Altus, Oklahoma
(580) 482-2120 office
(580) 482-0208 fax
(580) 481-4050 mobile

randy.boman@okstate.edu

www.cotton.okstate.edu

www.ntokcotton.org

Oklahoma State University in compliance with Title VI and VII of the Civil Rights Act of 1964, Executive Order 11246 as amended, Title IX of the Education Amendments of 1972, Americans with Disabilities Act of 1990, and other federal laws and regulations does not discriminate on the basis of race, color, national origin, sex, age, religion, disability, or status as a veteran in any of its policies, practices, or procedures. This includes but is not limited to admissions, employment, financial aid, and educational services.